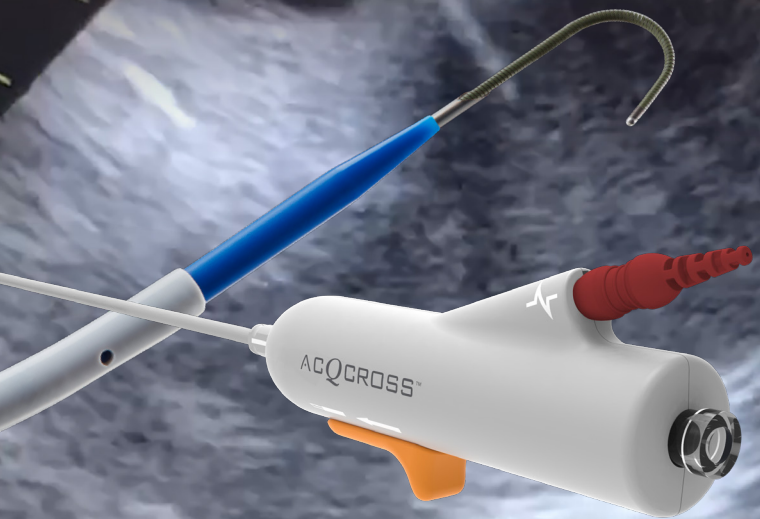


ACQCROSS[™]

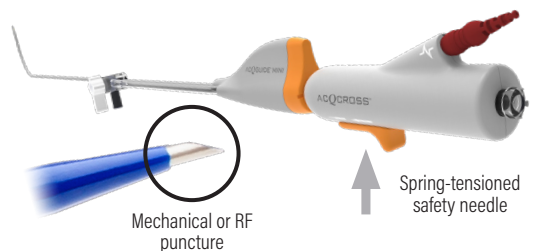
TRANSSEPTAL ACCESS SYSTEM



EXCHANGE LESS — REPOSITION WITH EASE

ACQCROSS[™]
INTEGRATED TRANSSEPTAL
DILATOR/NEEDLE

- Spring-tensioned safety needle; only deploys when actuated
- Integrated dilator/needle and introducer lock together as one unit for control and ease of use
- Reduce wire exchanges with retained guide-wire method
- Dual purpose needle; use mechanically or with RF energy
- Packaged as a convenient kit with Integrated dilator/needle, steerable or fixed curve introducer, guidewire, and ES and EGM cables



ACQGUIDE[™] MINI
FIXED-CURVE INTRODUCER

- Facilitate positioning with fixed distal curve and improved torquability

Compatible with Industry-Leading Introducers



Abbott Agilis NxT Steerable
Introducer



Abbott Swartz Braided Transseptal
Guiding Introducer, SL1



BioSense Webster[®] CARTO VIZIGO[®]
Bi-Directional Guiding Sheath

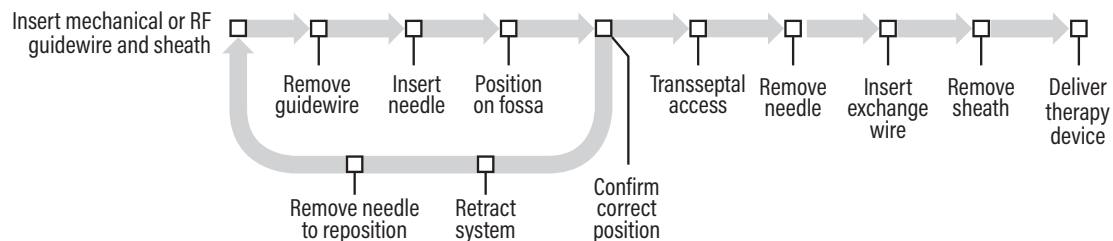


Medtronic FlexCath Advance[™]
Steerable Sheath*



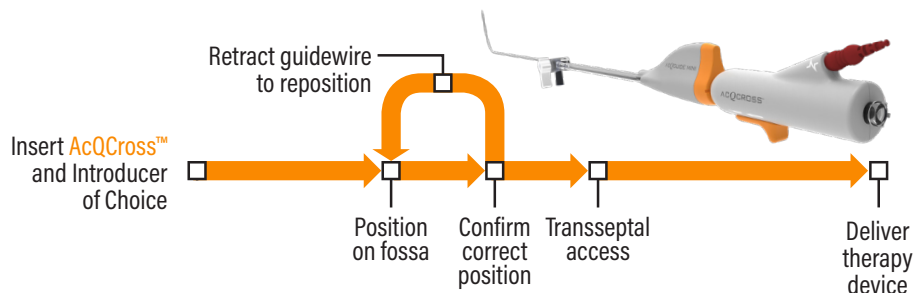
Acutus Medical
AcQGuide[®] MAX

Traditional transseptal access workflow

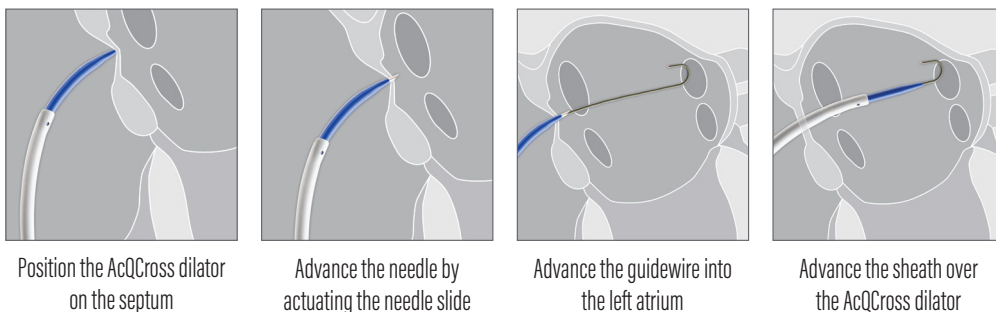


AcQCross™ Workflow

Half the steps of a traditional transseptal access workflow



AcQCross™ Transseptal Access Procedure



ORDERING INFORMATION

Transseptal Access System for Mechanical or RF Energy Application

PRODUCT NAME	PRODUCT DESCRIPTION	ITEM #
AcQGuide® FLEX with RF 65 cm - MED Curl	65 cm, Med Curl, 8.5F ID, 12F OD	222852
AcQGuide® MINI-S with RF 65 cm - L2	65 cm, 90 deg, 8.5F ID, 11F OD	012852
AcQCross™ — AG 61 cm	Agilis NxT — 61 cm	900300
AcQCross™ — AG 71 cm	Agilis NxT — 71 cm	900301
AcQCross™ — SL 63 cm	SL1 — 63 cm	900302
AcQCross™ — VZ 71 cm	CARTO VIZIGO — 71 cm	900303
AcQCross™ — FC 65 cm	FlexCath Advance — 65 cm	900304
AcQCross™ — MAX 70 cm	Acutus Medical AcQGuide MAX 70 cm	900305

NOTE: All Steerable and Fixed-Curve products packaged with appropriate length AcQCross™ Transseptal Dilator/Needle (8.5F OD)

Prior to using these devices, please review the Instructions for Use for a complete listing of indications, contraindications, warnings, precautions, potential adverse events, and directions for use. The AcQGuide® MINI with AcQCross™ and AcQGuide® FLEX with AcQCross™ devices are CE Marked and FDA cleared. acutus.com/patents

Acutus Medical®, Acutus® and AcQMap® are registered trademarks of Acutus Medical, Inc. AcQCross™, AcQGuide® FLEX, AcQGuide® MINI are trademarks of Acutus Medical. This material is the property of Acutus Medical and its subsidiaries. Please do not copy, forward, or distribute this document. Copyright © 2022 Acutus Medical, Inc. All rights reserved.

ACUTUS MEDICAL, INC.
2210 Faraday Ave, Suite 100
Carlsbad, CA 92008 United States
Phone: 888-202-8151
acutus.com

ACUTUS MEDICAL NV
Ikaroslaan 25
1930 Zaventem, Belgium
Phone: +32 2 669 75 00
FAX: +32 2 669 75 01
acutus.com

